

## JES000022 - © 25.04.2023 - J.E.Seewer

Blackstone Models™

2-8-2 K-27 HOn3 D&RGW / RGS

New motor and ESU LokSound decoder

Furnitures			
Quantity	Élément	Reference	Builder
1	Motor 10x24 12 V	1024 K 012 SR	Faulhaber
1	Mounting flange for the motor	JES000787	
2	Screw M 1.4 x 5.0 mm		
1	Brass sleeve Ø 1.0 x Ø 1.5 x 6 mm		
1	Support plate 21MTC	51967	ESU
1	LokSound 5 decoder 21MTC	58419	ESU

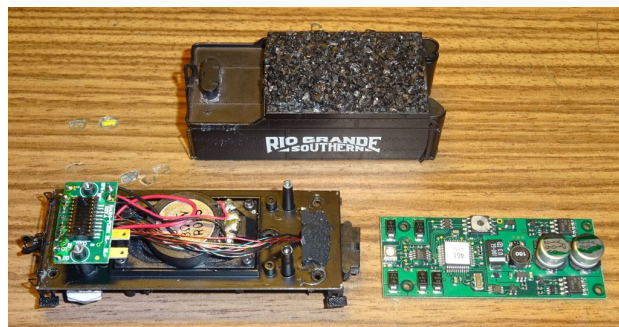
### Instructions

The K-27 locomotives from Blackstone Models are beautiful models, but the motorization is deplorable. It is therefore necessary to replace the motor and given the virtual impossibility of finding an identical motor, it is best to install a coreless motor.

In the sound system with the Blackstone decoder, the exhaust strokes are controlled by a perforated disc and an IR gate.

This equipment must be removed with a coreless engine (longer and without rear shaft) it is necessary to install an ESU LokSound 5 decoder, capable of managing the exhaust, in place of the original decoder.

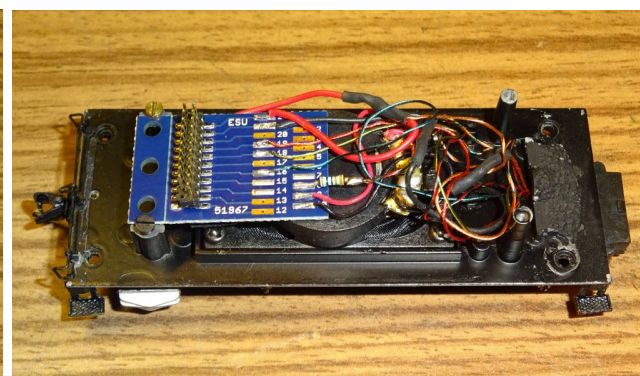
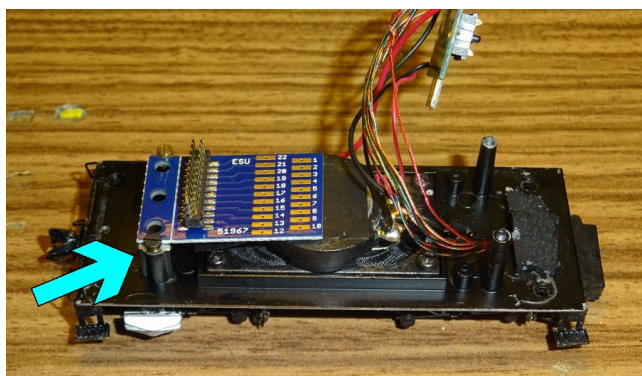
Separate the loc from the tender. Disassemble the tender body. Remove the decoder and its support. Leave the wires connected momentarily.



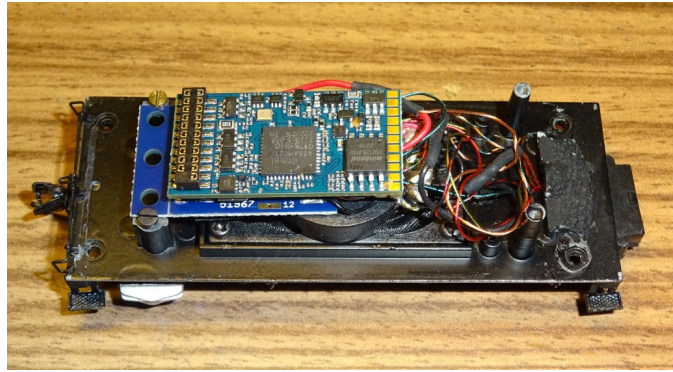
Saw the rear supports low enough so that the ESU decoder mounted on the plate does not touch the tender body. (View the photo)

Secure the 21MTC plate using the original screws or replacement screws.

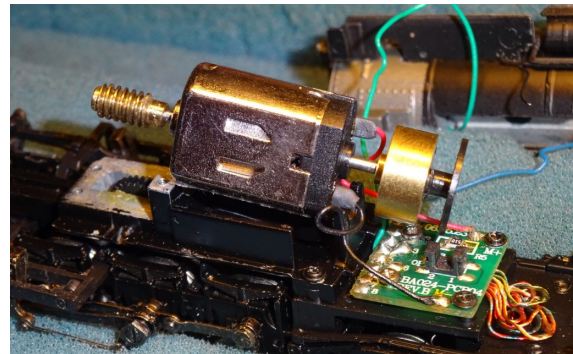
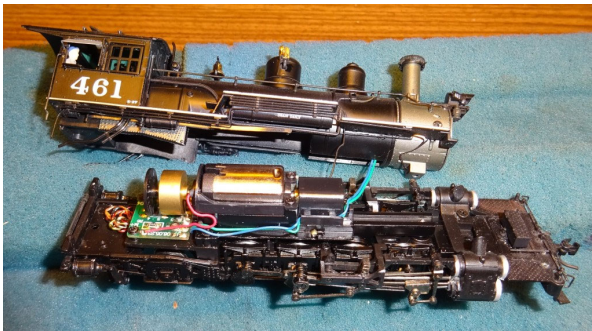
The plate is simply clamped by the sides. Connect the wires to the terminals of the 21MTC board.



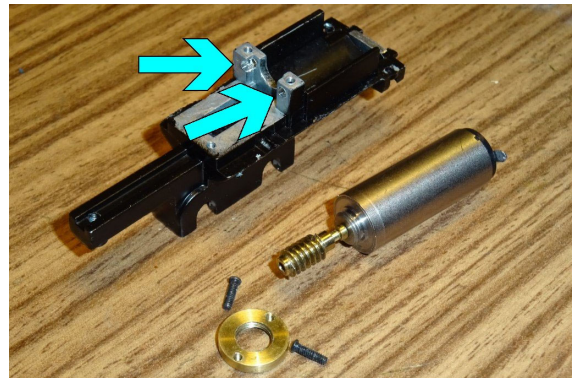
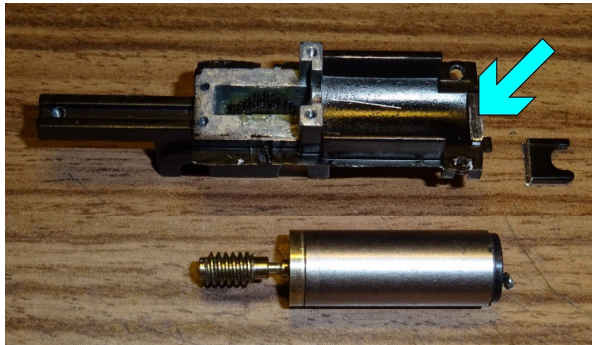
Install the decoder on the support plate.



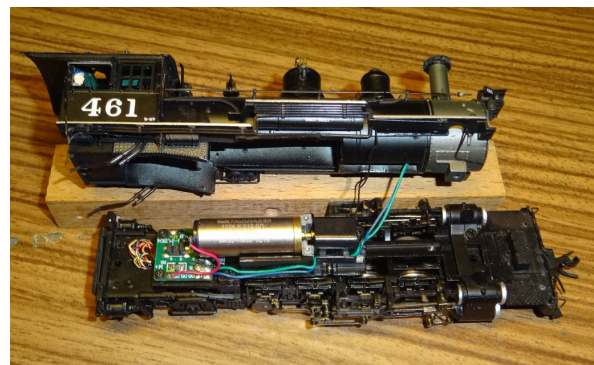
Disassemble the locomotive body per the instructions in the Blackstone manual  
Disassemble the motor according to the instructions in the Blackstone manual and desolder the wires from the motor.

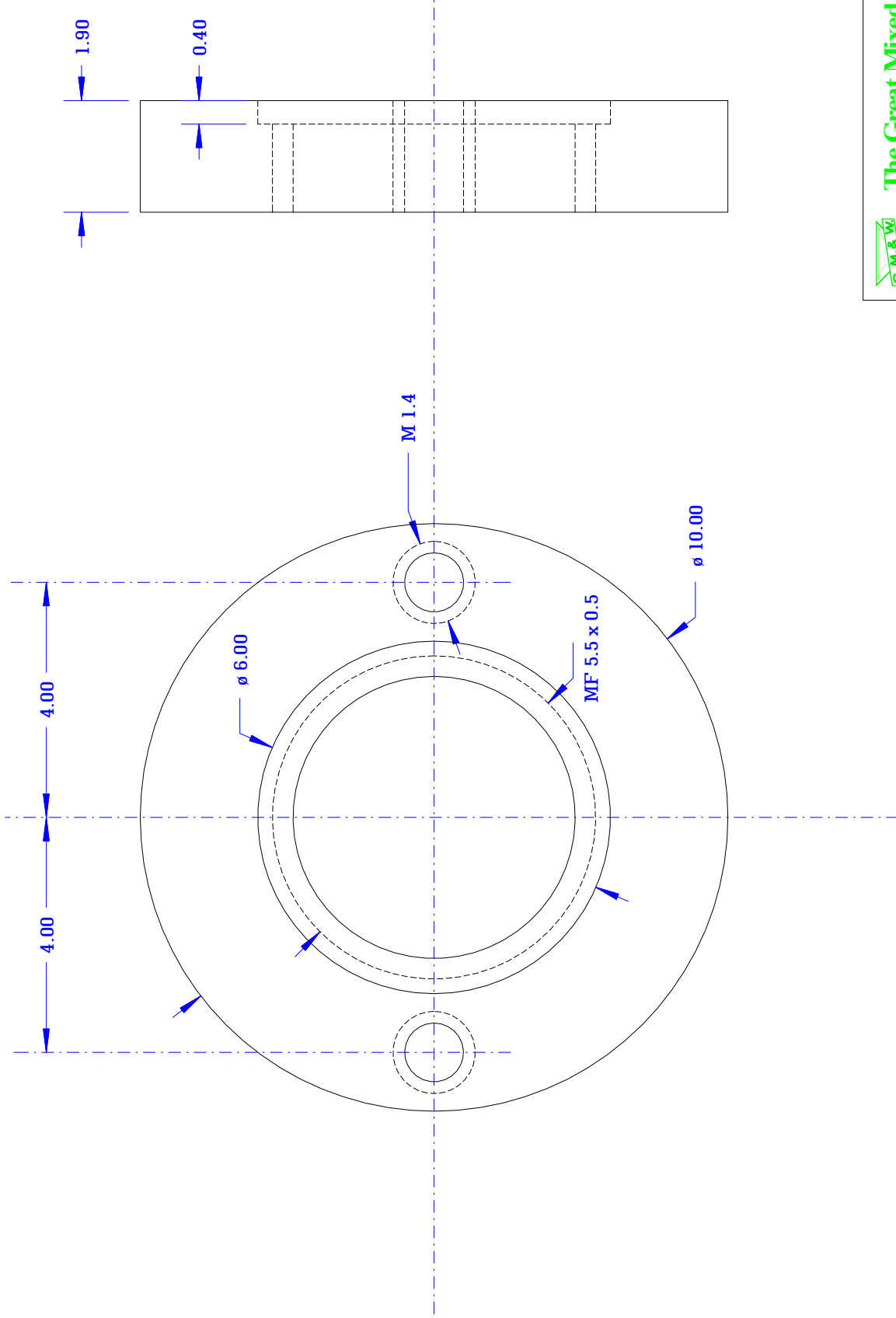


Remove the motor support (2 screws above and 1 screw below)  
Saw off the front mount of the Blackstone engine. (See photo) Remove the worm from the Blackstone motor, drive out the bushing on the Faulhaber motor shaft and drive out the worm over the bushing leaving a 2mm gap before the motor shaft stop.



Drill two 1.5mm holes spaced 8mm apart in the bracket at the motor shaft. (View the photo)  
Tighten the motor on the flange and screw it all in, checking the play of the gear.  
Lubricate the transmission with gear oil. Replace the worm screw cover.  
Refit the motor support. It will be necessary to dismantle the guard plate under the locomotive (6 screws) to correctly position the two meshed axes.





Laiton



The Great Mixed & Western RR

JES000787	Dessiné	04.05.2012 JES
Bague de fixation pour moteur Faulhaber 1016 N	Modifié	